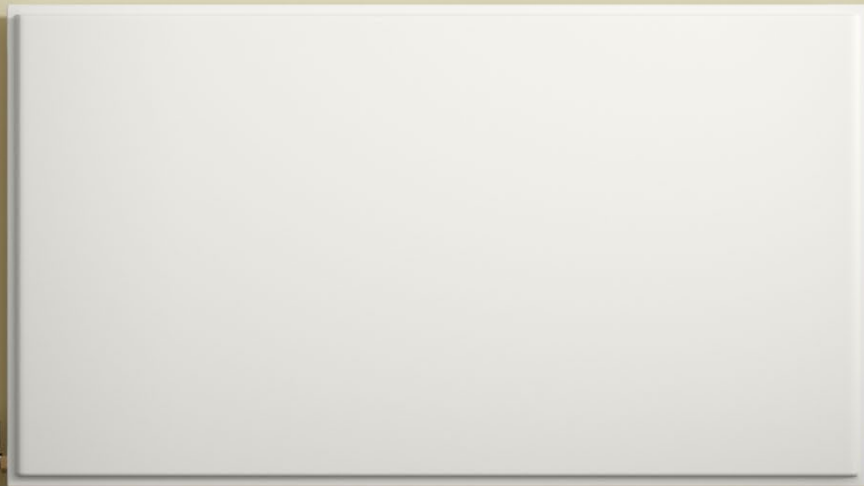


HUDEVAD

RADIATOR DESIGN



P5 K3

50 Δ t
(75/65/20°C)

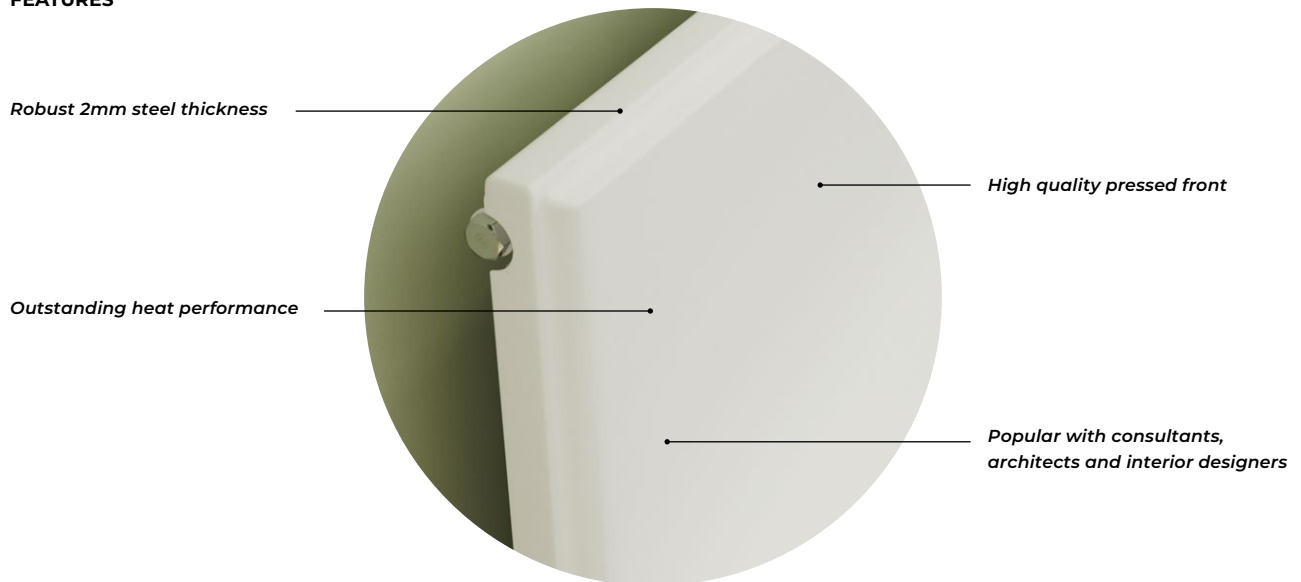
K3

Height mm	Length mm	Hudevad UIN	Watts	Heat output Btu/hr	Prod weight (kg)
600	800	H131063308	1630	5562	47.0
	1000	H131063310	1956	6674	58.7
	1200	H131063312	2282	7787	70.4

Δ t50 is the UK's industry standard for heating outputs, which has an operating temperature of 75/65/20°C. If you have a low temperature heat source you may wish to consider Δ t40 or Δ t30 output (see your installer or system designer or download from www.stelrad.com).

For EN442 data, technical and installation information please visit our website: www.stelrad.com and search product downloads.

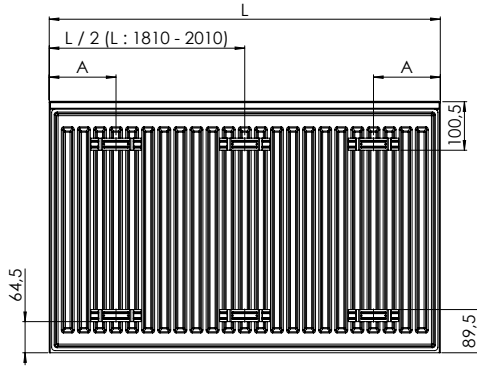
FEATURES



WALL MOUNTING AND LUG INFORMATION

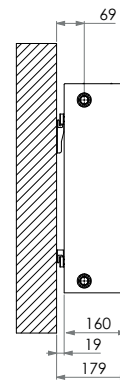
All dimensions in mm.

REAR ELEVATION



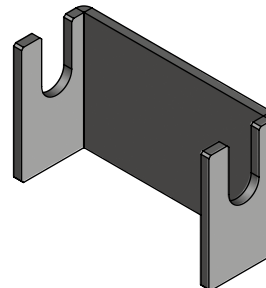
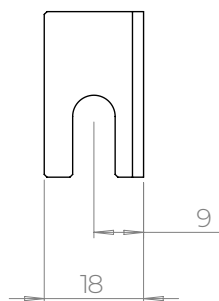
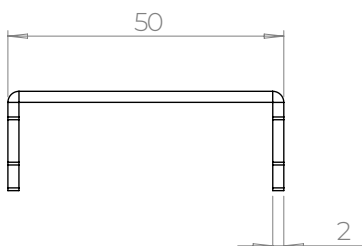
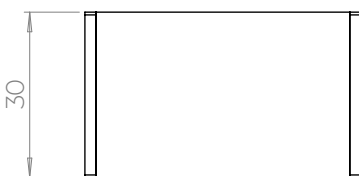
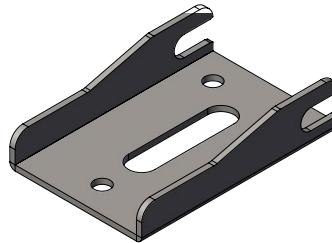
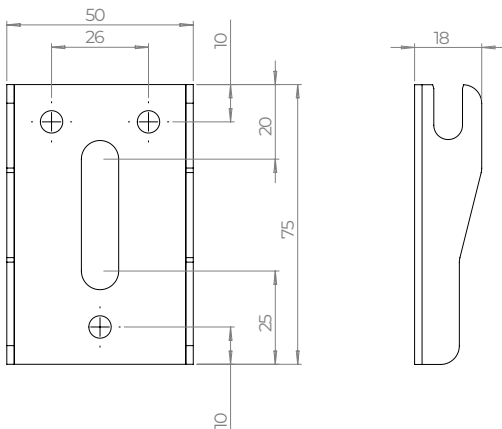
L	A
410-2010	138

SIDE ELEVATION



MOUNTING BRACKETS

All dimensions in mm.

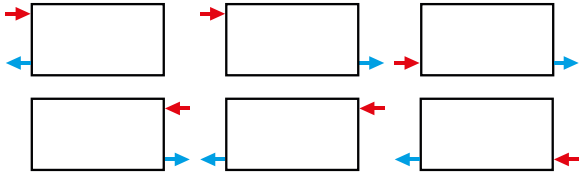


CONNECTIONS

Each radiator comes with ½" inlet connections as standard.

PIPING OPTIONS

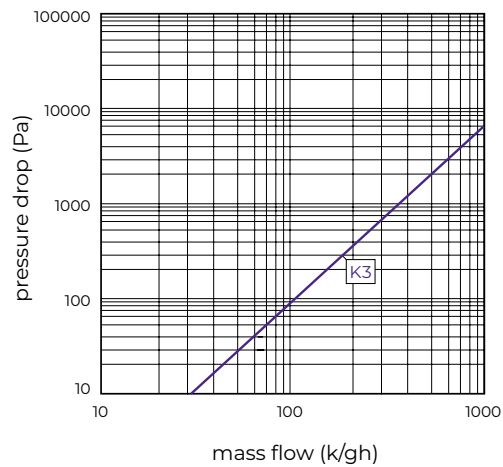
(Tapping Code / TC10)



EN 442 CERTIFICATION DATA - CETIAT TESTED IN ACCORDANCE WITH BS EN 442

Type	K3
Casing Height	620
Emitter Height	600
W/m at 75/65/20	2031
n-coefficients	1.31
Weight (kg/m)	58.70
Water contents (l/m)	9.80

PRESSURE DROPS



Type	Kv
K3	3.65