

HOME

SERIES



Matte
Black Towel
Rail

50 Δ t

(75/65/20°C)

UIN	EAN	Range	Height mm	Length mm	Type	Output dt50 Watts Btu/hr		List	List + VAT
751105	5414305918710	Matte Black Towel Rail	700	420	Straight	282	962	£53.12	£63.74
751106	5414305918727	Matte Black Towel Rail	862	500	Straight	374	1,276	£70.92	£85.10
751107	5028860002380	Matte Black Towel Rail	1211	500	Straight	576	1,965	£88.62	£106.34

Δ t50 is the UK's industry standard for heating outputs, which has an operating temperature of 75/65/20°C. If you have a low temperature heat source you may wish to consider Δ t40 or Δ t30 output (see your installer or system designer or download from www.stelrad.com).

For EN442 data, technical and installation information please visit our website: www.stelrad.com and search product downloads.

EN 442 CERTIFICATION DATA - CETIAT TESTED IN ACCORDANCE WITH BS EN 442

Type			
No of tubes	14	16	25
Height	700	862	1211
Length	420	500	500
Watts at 75/65/20	282	374	576
n-coefficients	1.2360	1.2477	1.2528
Heated surface area (m ²)	0.45	0.61	1.11
Weight (kg)	3.55	4.80	9.63
Water contents (l)	2.40	3.15	6.89
KM	2.2404	2.8384	4.2850

CONNECTIONS

Each radiator comes with ½" inlet connections as standard.

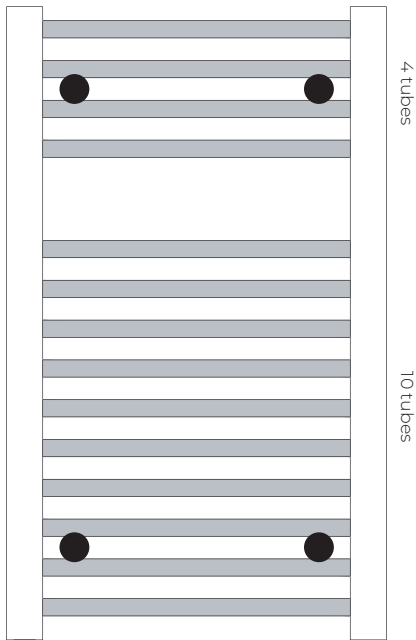
MATTE BLACK TOWEL RAIL



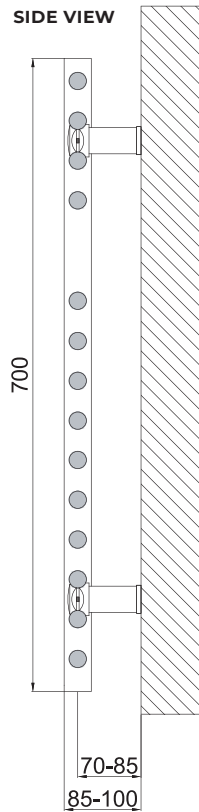
WALL MOUNTING INFORMATION

All dimensions in mm.

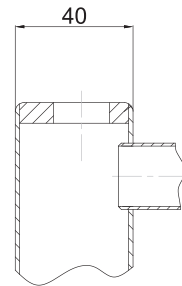
FRONT VIEW



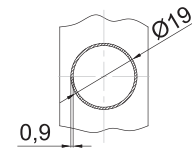
SIDE VIEW



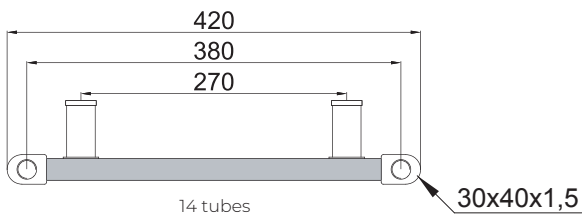
HEADER TUBE DIMENSION



TUBE DIMENSION

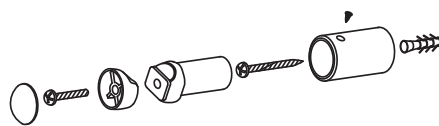


TOP AND BOTTOM VIEW



MOUNTING BRACKETS

4 pcs universal mounting bracket.



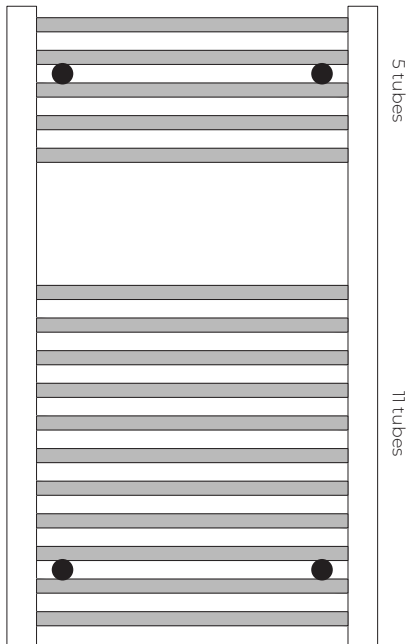
MATTE BLACK TOWEL RAIL



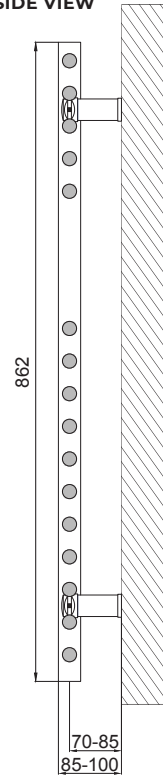
WALL MOUNTING INFORMATION

All dimensions in mm. All connections are 1/2 inch.

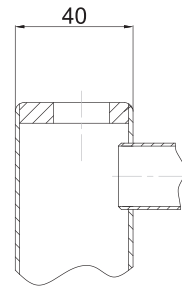
FRONT VIEW



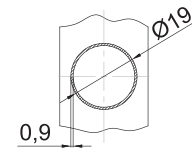
SIDE VIEW



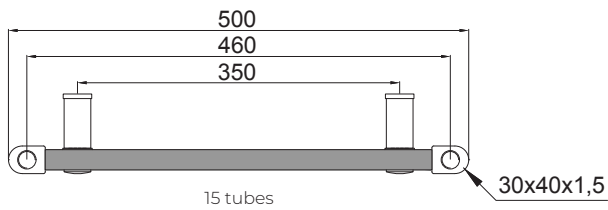
HEADER TUBE DIMENSION



TUBE DIMENSION

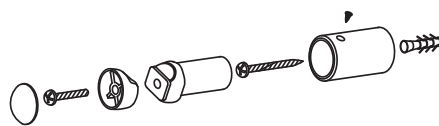


TOP AND BOTTOM VIEW



MOUNTING BRACKETS

4 pcs universal mounting bracket.



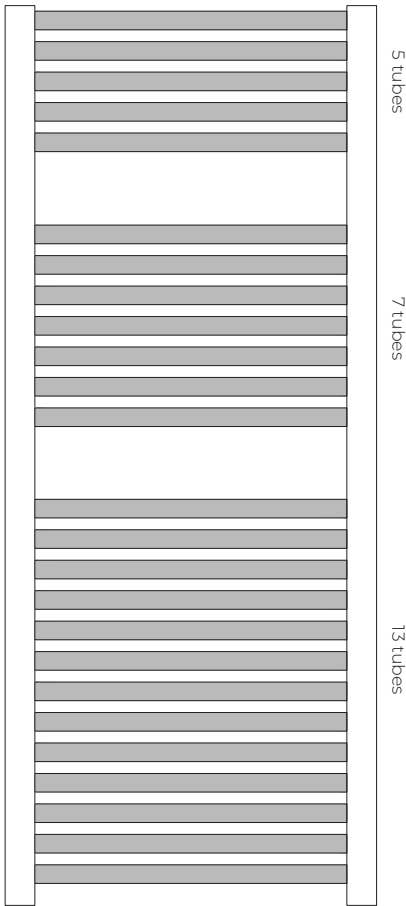
MATTE BLACK TOWEL RAIL



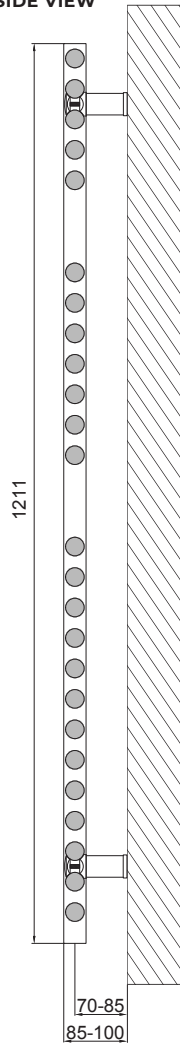
WALL MOUNTING INFORMATION

All dimensions in mm. All connections are 1/2 inch.

FRONT VIEW



SIDE VIEW



TOP AND BOTTOM VIEW

