

HUDEVAD

RADIATOR DESIGN



P5
VERTICAL

50 Δ t

(75/65/20°C)

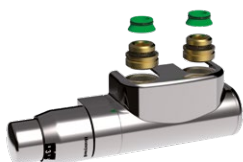
K2

Height mm	Length mm	Hudevad UIN	Watts	Heat output Btu/hr	Prod weight (kg)
1800	400	H133218224	1476	5036	49.8
	500	H133218225	1845	6295	62.3
	600	H133218226	2214	7554	74.7

Δ t50 is the UK's industry standard for heating outputs, which has an operating temperature of 75/65/20°C. If you have a low temperature heat source you may wish to consider Δ t40 or Δ t30 output (see your installer or system designer or download from www.stelrad.com).

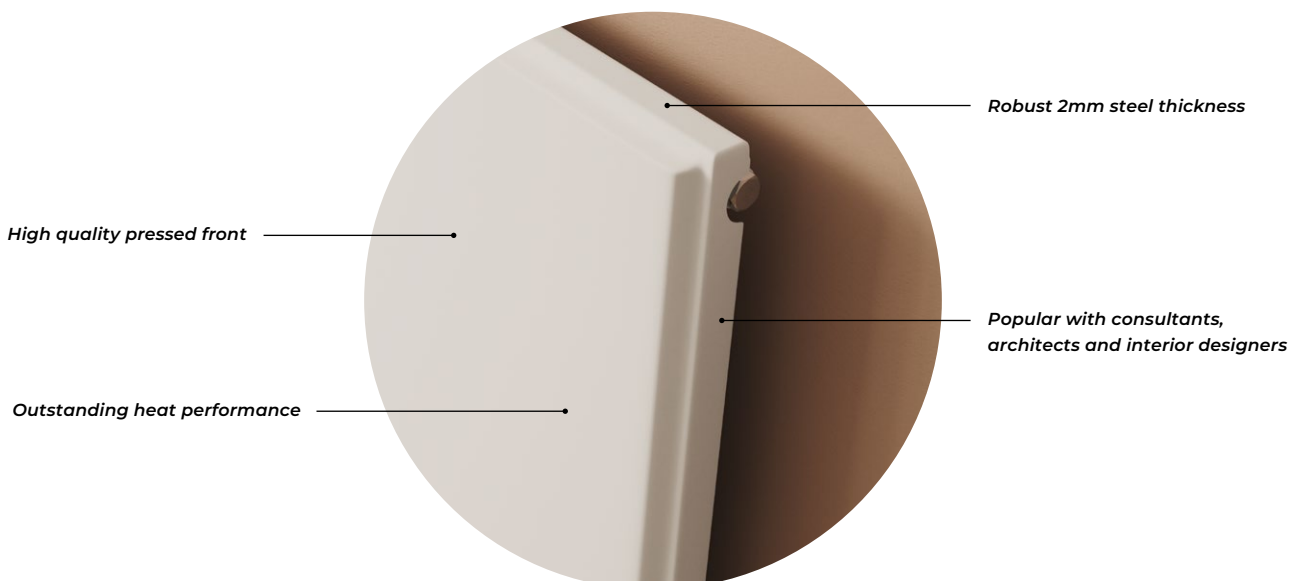
For EN442 data, technical and installation information please visit our website: www.stelrad.com and search product downloads.

CENTRE TAP TRV



UIN	Elements
14531310	CENTRE TAP TRV STRAIGHT WHITE -10MM
14531312	CENTRE TAP TRV STRAIGHT WHITE -1/2IN
14531315	CENTRE TAP TRV STRAIGHT WHITE -15MM
14531410	CENTRE TAP TRV STRAIGHT CHROME -10MM
14531412	CENTRE TAP TRV STRAIGHT CHROME -1/2IN
14531415	CENTRE TAP TRV STRAIGHT CHROME -15MM
14531710	CENTRE TAP TRV ANGLED R WHITE -10MM*
14531712	CENTRE TAP TRV ANGLED R WHITE -1/2IN*
14531715	CENTRE TAP TRV ANGLED R WHITE -15MM*
14531810	CENTRE TAP TRV ANGLED R CHROME -10MM*
14531812	CENTRE TAP TRV ANGLED R CHROME -1/2IN*
14531815	CENTRE TAP TRV ANGLED R CHROME -15MM*

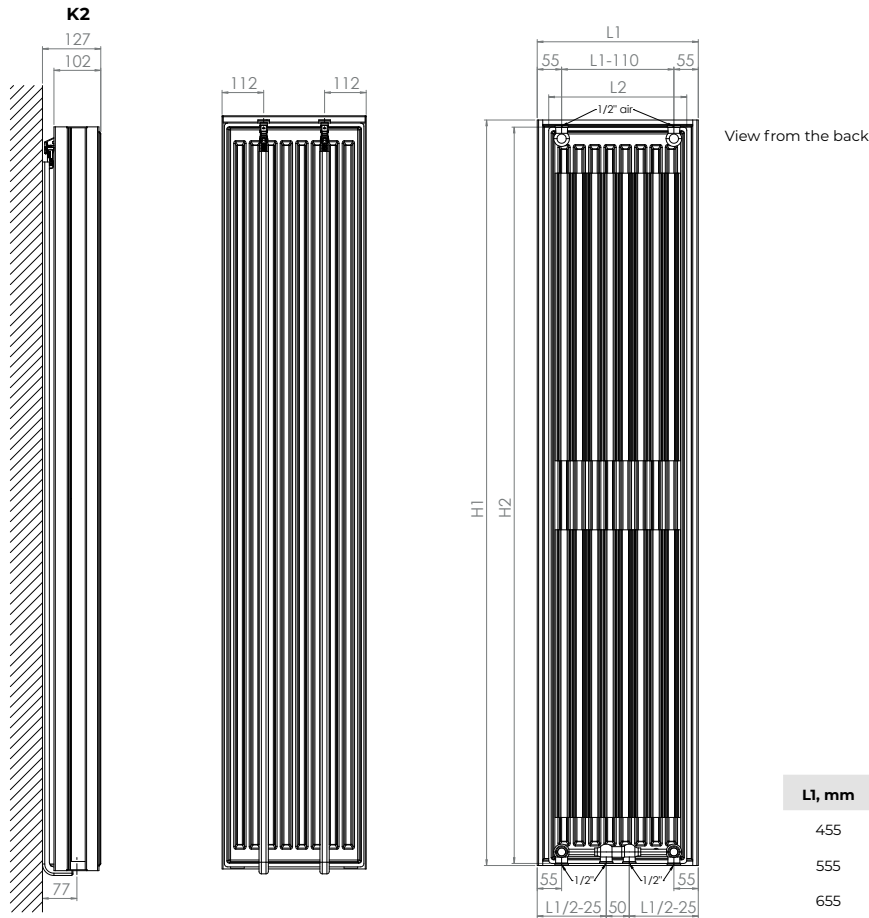
FEATURES



P5 VERTICAL

WALL MOUNTING INFORMATION

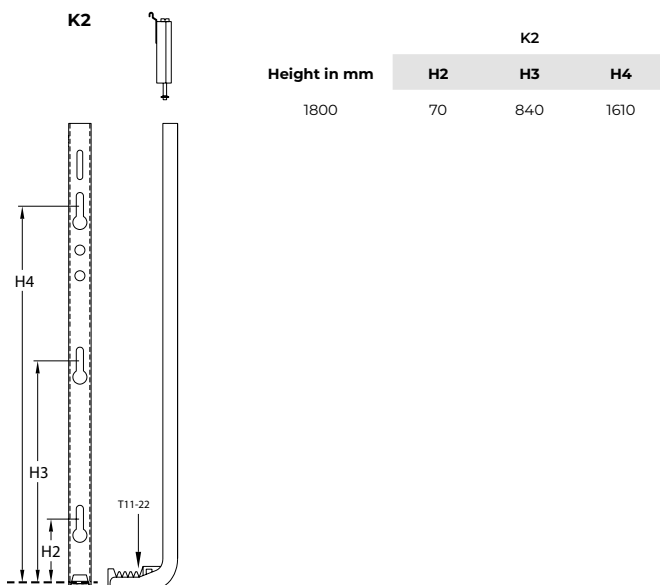
All dimensions in mm.



L1, mm	L2, mm	H1, mm	H2, mm
455	400		
555	500	1820mm	1800mm
655	600		

MOUNTING BRACKETS

All dimensions in mm.



CONNECTIONS

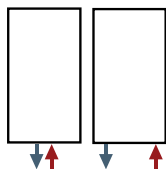
Each radiator comes with ½" inlet connections as standard.

EN 442 CERTIFICATION DATA - CETIAT TESTED IN ACCORDANCE WITH BS EN 442

Type	K2
Casing Height	1820
Emitter Height	1800
W/m at 75/65/20	3690
n-coefficients	1.33
Weight (kg/m)	124.5
Water contents (l/m)	15.90

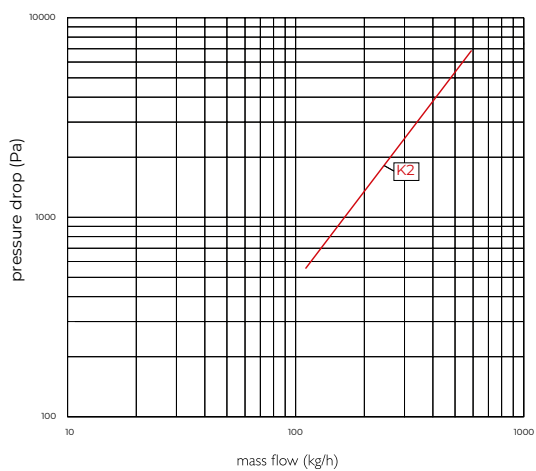
PIPING OPTIONS

(Tapping Code / TC 31R)



View from the front

PRESSURE DROPS



Type	Kv
K2	1.85