

# SPECIAL APPLICATION SERIES



HEAVY DUTY  
DECO

**50 $\Delta$ t**  
(75/65/20°C)

K1



K2



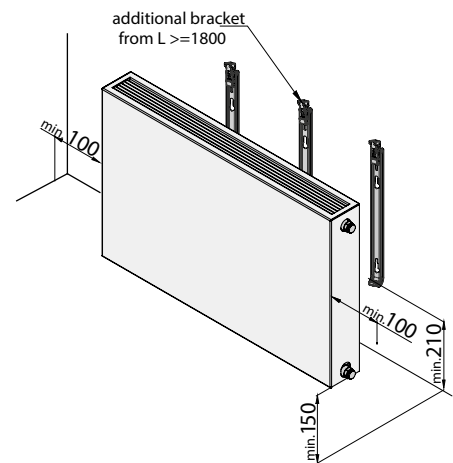
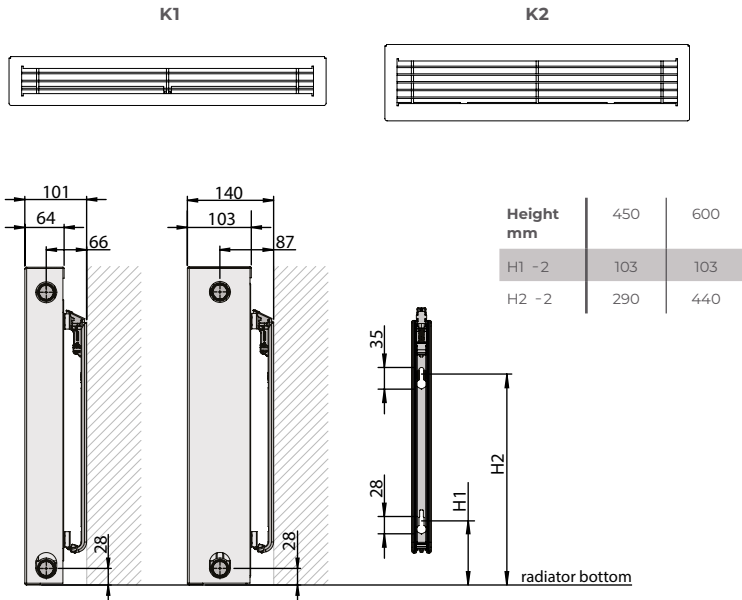
Height mm	Length mm	Stelrad UIN	Watts	Heat output Btu/hr	Stelrad UIN	Watts	Heat output Btu/hr
<b>450</b>	400	7641104	268	914	7642204	500	1706
	600	7641106	403	1375	7642206	750	2559
	800	7641108	537	1832	7642208	999	3409
	1000	7641110	672	2293	7642210	1249	4262
	1200	7641112	806	2750	7642212	1499	5115
	1400	7641114	941	3211	7642214	1749	5968
	1600	7641116	1075	3668	7642216	1999	6821
	1800	7641118	1209	4125	7642218	2248	7670
	2000	7641120	1362	4647	7642220	2546	8687
<b>600</b>	400	7661104	348	1187	7662204	640	2184
	600	7661106	522	1781	7662206	961	3280
	800	7661108	696	2375	7662208	1281	4372
	1000	7661110	870	2968	7662210	1601	5464
	1200	7661112	1044	3562	7662212	1921	6556
	1400	7661114	1218	4156	7662214	2241	7649
	1600	7661116	1392	4750	7662216	2562	8744
	1800	7661118	1566	5343	7662218	2882	9836
	2000	7661120	1740	5937	7662220	3202	10928

$\Delta$ t50 is the UK's industry standard for heating outputs, which has an operating temperature of 75/65/20°C. If you have a low temperature heat source you may wish to consider  $\Delta$ t40 or  $\Delta$ t30 output (see your installer or system designer or download from [www.stelrad.com](http://www.stelrad.com)).

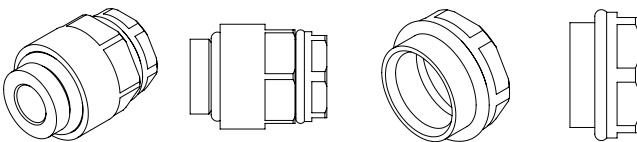
For EN442 data, technical and installation information please visit our website: [www.stelrad.com](http://www.stelrad.com) and search product downloads.

## WALL MOUNTING INFORMATION

All dimensions in mm. Inches in brackets.



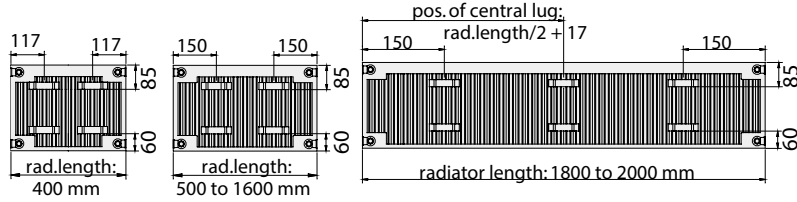
## EXTENSION PIECE AND AIR VENT IS INCLUDED IN THE HARDWARE PACK



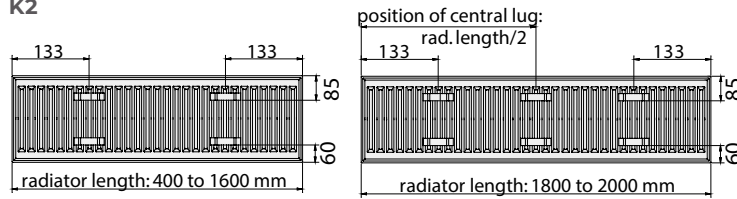
## K1 AND K2 LUG POSITIONS

All dimensions in mm. Inches in brackets.

### K1



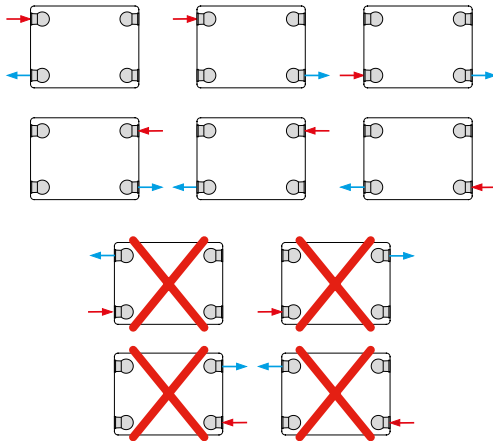
### K2



## CONNECTIONS

Each radiator comes with 1/2" inlet connections as standard.

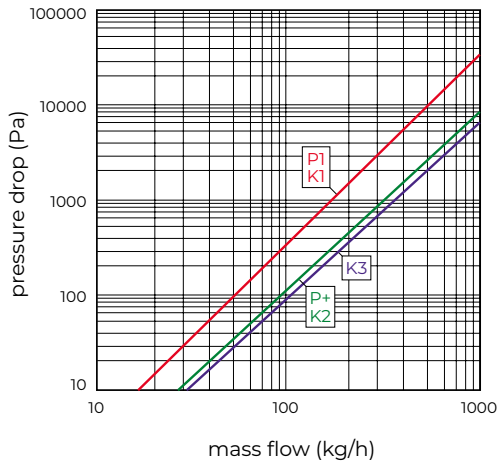
## PIPING OPTIONS



## EN 442 CERTIFICATION DATA - CETIAT TESTED IN ACCORDANCE WITH BS EN 442

Type	K1		K2	
Height	450	600	450	600
W/m at 75/65/20	681	870	1273	1601
n-coefficients	1.27	1.28	1.31	1.31
Heated surface area (m <sup>2</sup> /m)	3.37	4.66	5.62	7.74
Weight (kg/m)	32.76	37.99	43.86	51.19
Water contents (l/m)	2.53	3.23	4.65	6.20
K <sub>M</sub>	4.67	5.89	7.69	9.37

## PRESSURE DROPS



Type	Kv
P1 / K1	1.67
P+ / K2	3.32
K3	3.65